

## ***Sites Available***

- Lavon, Texas, USA
- Off of FM 2755
- Part of Elevon Master Planned Community with 2,263 residential lots planned.
- Bear Creek SUD water line along FM 2755
- City Sanitary Sewer 8" line along FM 2755
- Garland Power & Light on site
- Farmer's Electric Substation planned just south of site site
- Atmos Gas at site and along FM 2755
- Oncor provides poles & wires in area



## **Business/Technology Park**

**60-80 acres**

**FM 2755**



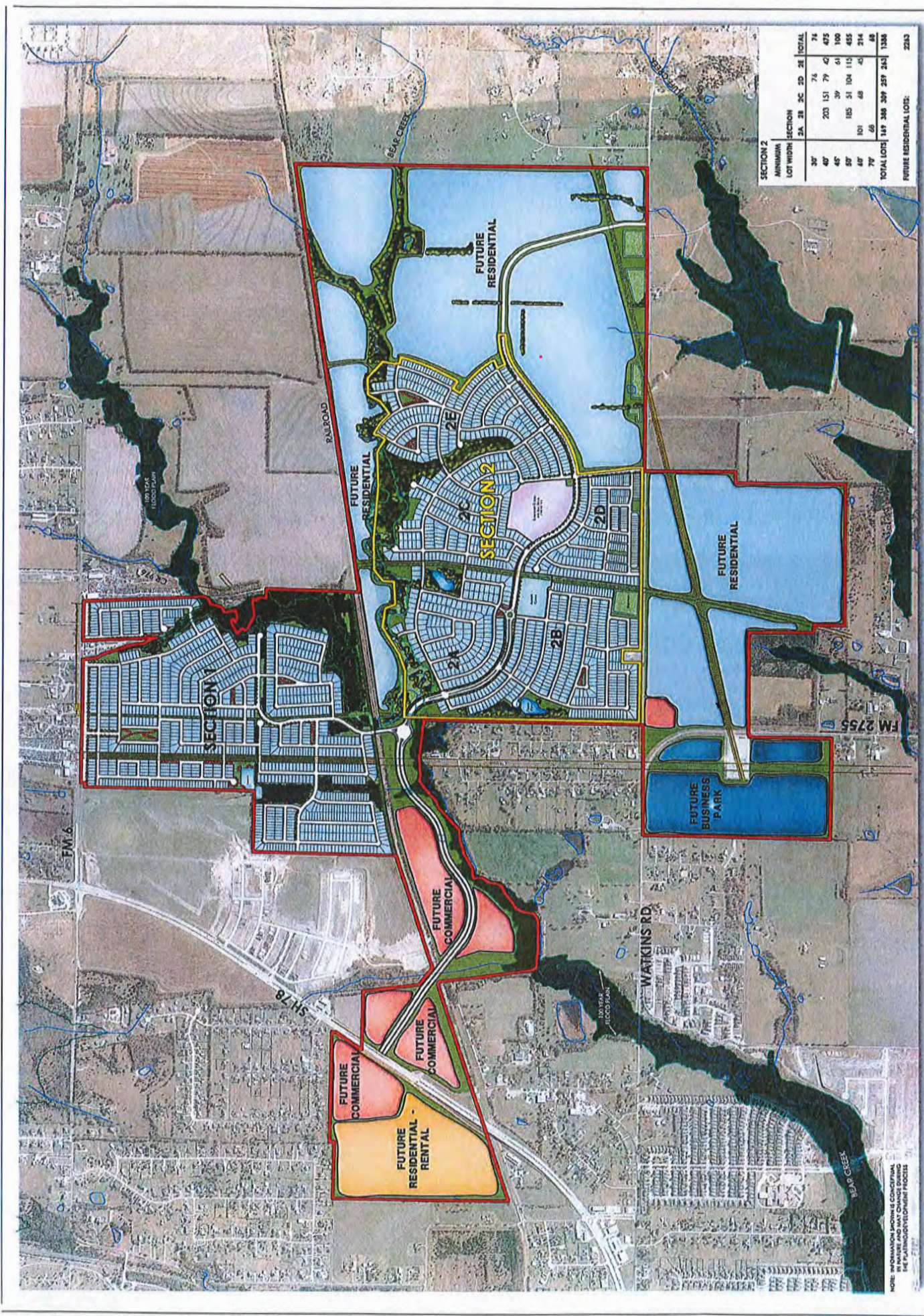
**Lavon Economic  
Development Corporation (LEDC)**

***"We cultivate Investment and  
Growth for the City of Lavon"***



**Owner : John Marlin**  
***jmarlin@madev.com***  
**972 897 2924**

**For More Information on the Lavon Market:**  
***Pam Mundo, LEDC Exec. Director***  
**214 773 0966**  
***Pam.mundo@lavonedc.com***



SECTION 2

MINIMUM LOT WIDTH	SECTION	2A	2B	2C	2D	2E	TOTAL
30'							74
40'		203	151	79	47		475
50'		185	51	104	112		455
60'		101		68	45		214
70'		65					65
<b>TOTAL LOTS</b>		<b>554</b>	<b>361</b>	<b>350</b>	<b>208</b>	<b>245</b>	<b>1388</b>

FUTURE RESIDENTIAL LOTS: 2243

ELEVON

NOTE: INFORMATION SHOWN IS CONCEPTUAL AND SUBJECT TO THE PLANNING/DEVELOPMENT PROCESS.